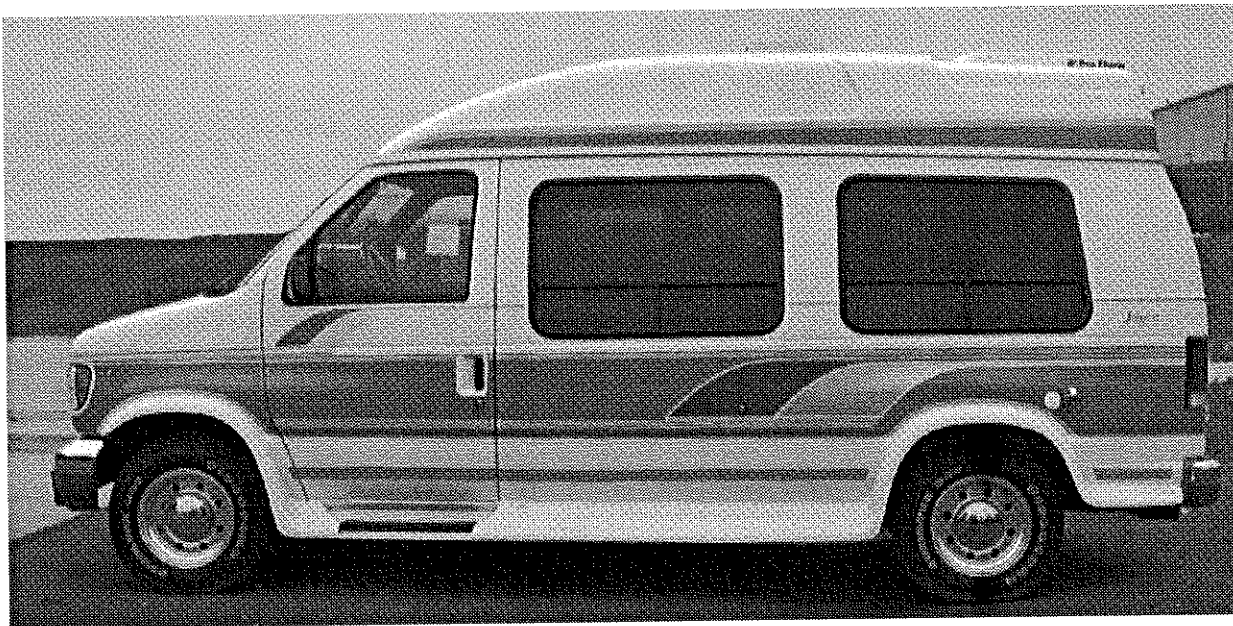


# **Jayco Class “B” Camper Van**



## **Quick Reference Guide**

## **Cunningham Campers, Inc.**

5201 Highway 62  
Jeffersonville, IN 47130

**1-812-284-0276 Option 3**



**Welcome to our Used Jayco Owners' Group**

***We Know Jayco Parts!***

As a group member you receive **10% OFF** any order for parts, not already on sale. Just call us **with your VIN #** and we will find what you need and ship it directly from Jayco to your front door.

Like Jayco, we are family owned and operated. Our courteous professionals are here to help make your shopping experience as pleasant as humanly possible.

# **1-812-284-0276**

## **Use Option 3 For Parts**

**<http://parts.cunninghamcampers.com/jaycoclub>**

**Cunningham's – Selling & Servicing Jayco RV's for OVER 38 Years!**



Front Flourescent

Camper  
Switch  
Panel

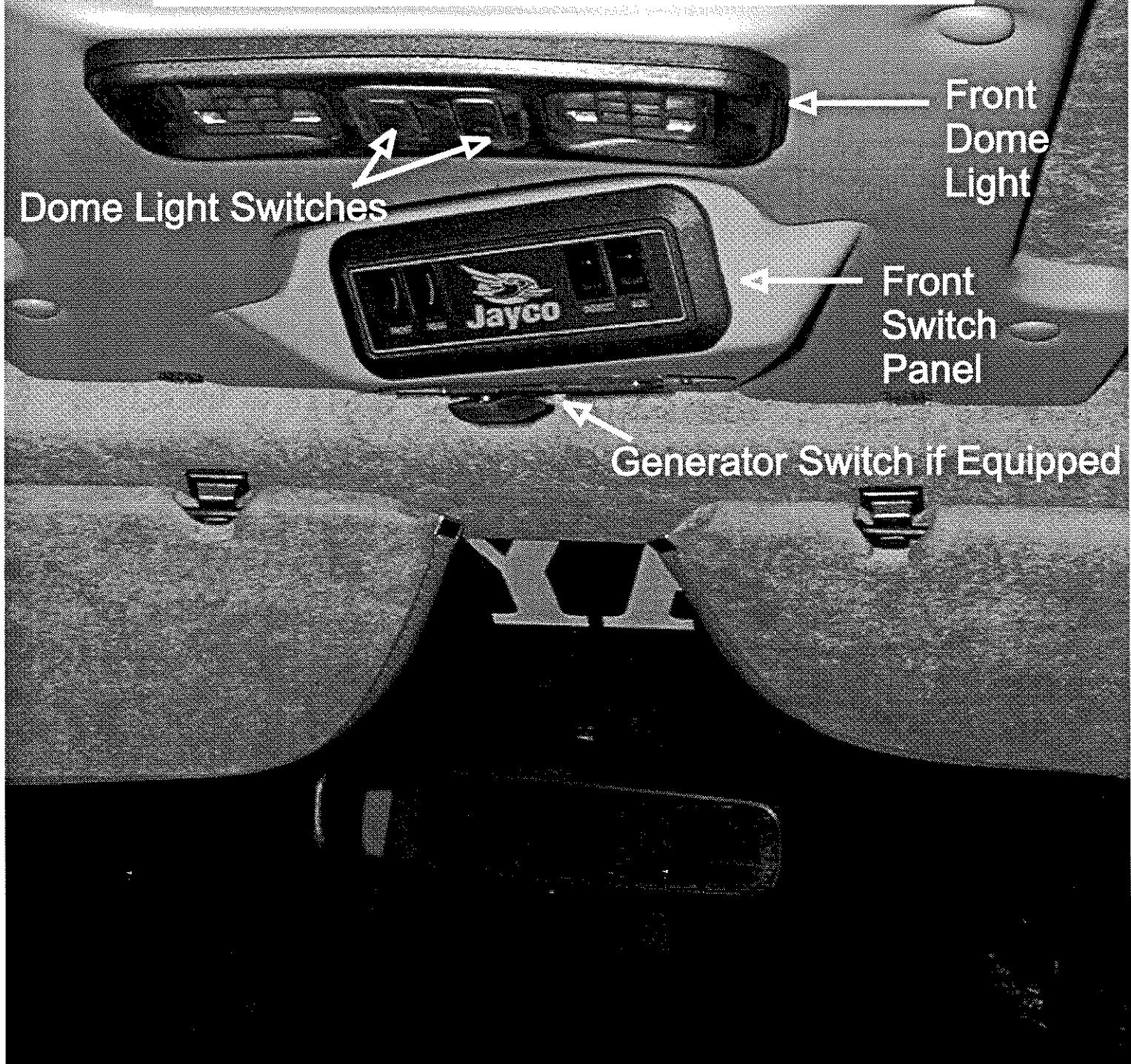
### Camper Switch Panel

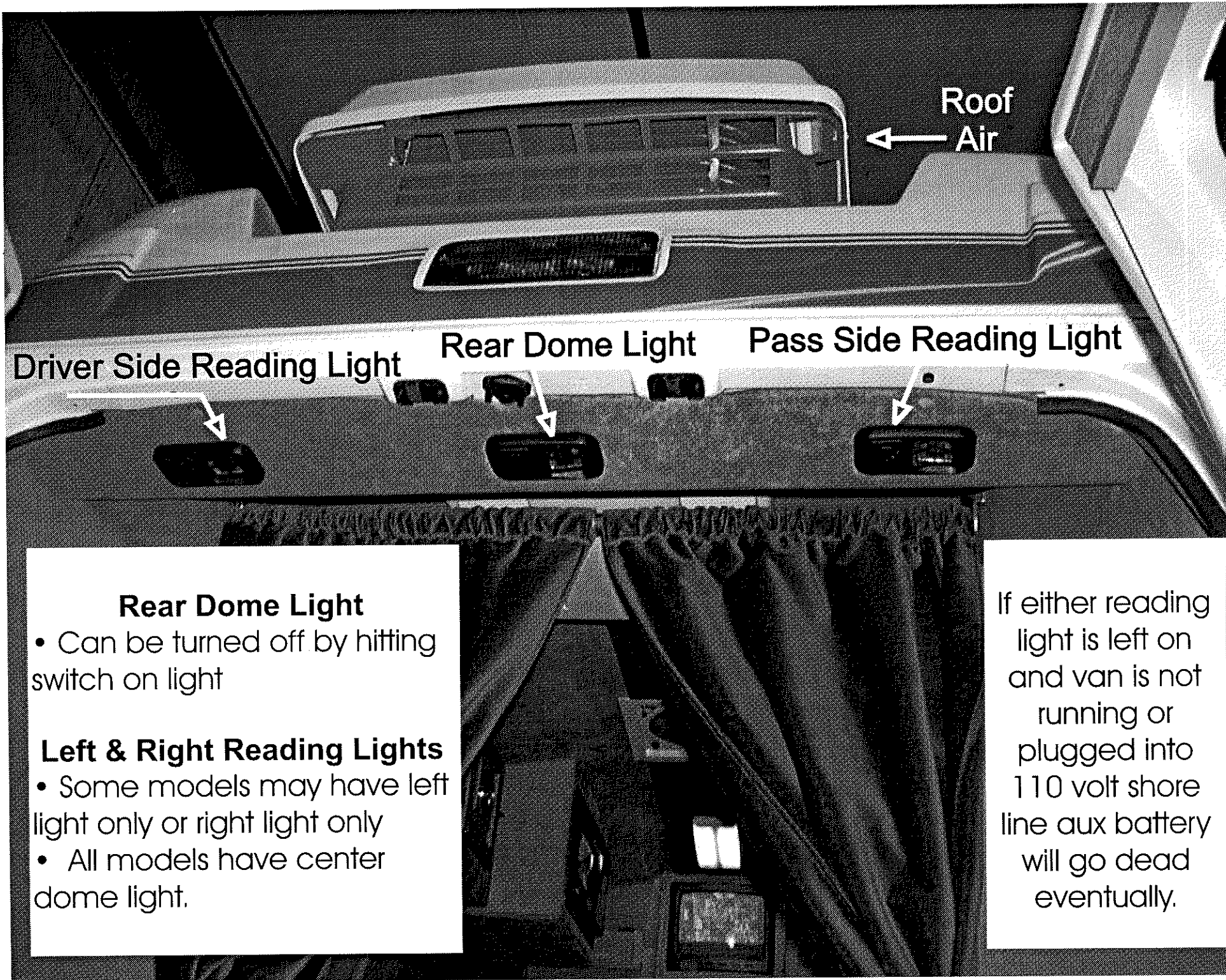
- All switches work off aux battery.
- If switches are left on and van is not running or 110 volt shore line plugged in the aux battery will eventually go dead.
- Fan will close automatically when it rains if aux battery is charged.



## Front Switch Panel

- All switches work off aux battery.
- If switches are left on and van is not running or 110 volt shore line plugged in the aux battery will eventually go dead.
- Switches from left to right
  - 1-Front flourescent
  - 2-Rear flourescent
  - 3-Indirect lights under valances
  - 4-Not used
- Front dome light
- Can be turned off by hitting switch on light.





3

### **Rear Dome Light**

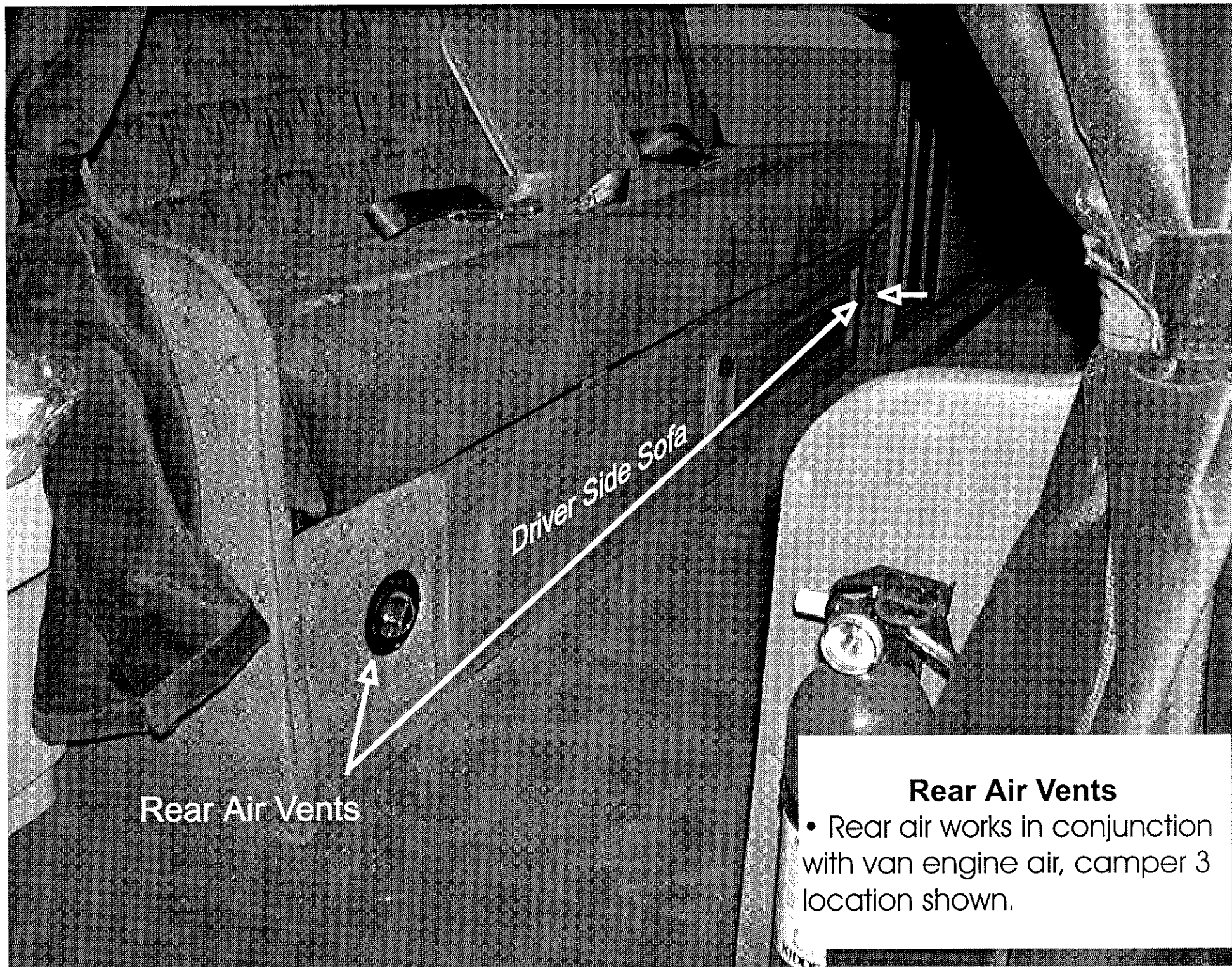
- Can be turned off by hitting switch on light

### **Left & Right Reading Lights**

- Some models may have left light only or right light only
- All models have center dome light.

If either reading light is left on and van is not running or plugged into 110 volt shore line aux battery will go dead eventually.





Rear Air Vents

Driver Side Sofa

### Rear Air Vents

- Rear air works in conjunction with van engine air, camper 3 location shown.



## TV-VCP works off of TV-VCP switch

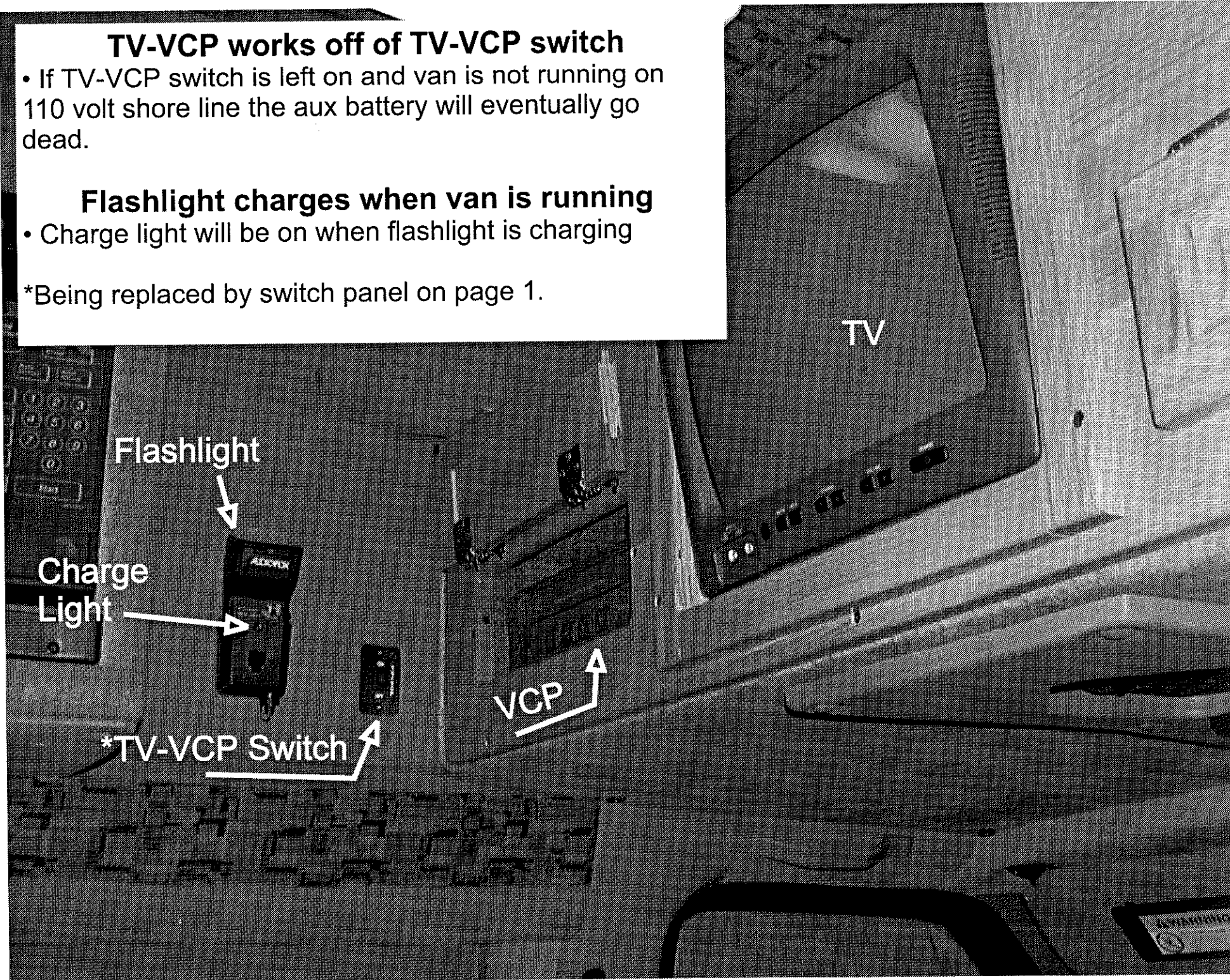
- If TV-VCP switch is left on and van is not running on 110 volt shore line the aux battery will eventually go dead.

## Flashlight charges when van is running

- Charge light will be on when flashlight is charging

\*Being replaced by switch panel on page 1.

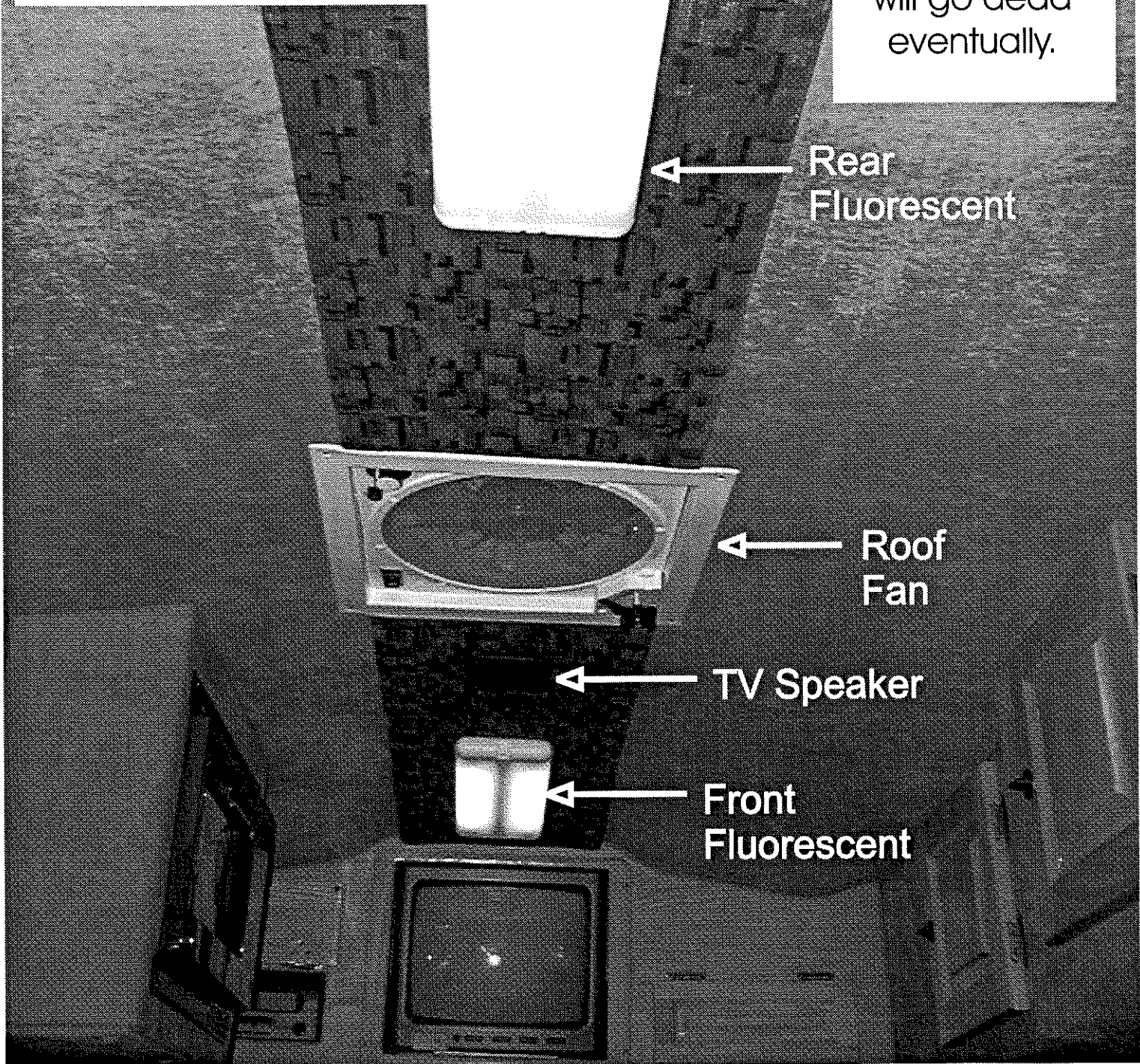
5



- Both fluorescents work off of front switch panel

- Fan works off of fan switch
- Fan has rain sensor and will close automatically when it rains if aux battery is charged

If fluorescents or fan is left on and van is not running or plugged into 110 volt shore line aux battery will go dead eventually.







Faucet

Hot Plate

\* Refer Switch

12 volt  
Outlet

Refrigerator

**Refrigerator** - works off of aux battery or 110 volt shore line or generator if equipped.

- If Refer switch is left on and van is not running or plugged into 110 volt shore line or running off generator (if equipped), the aux battery will eventually go dead.

**Faucet** - Works off aux battery, if faucet is left on and 2-1/2 gal. fresh water holding tank is allowed to go dry faucet pump could be damaged.

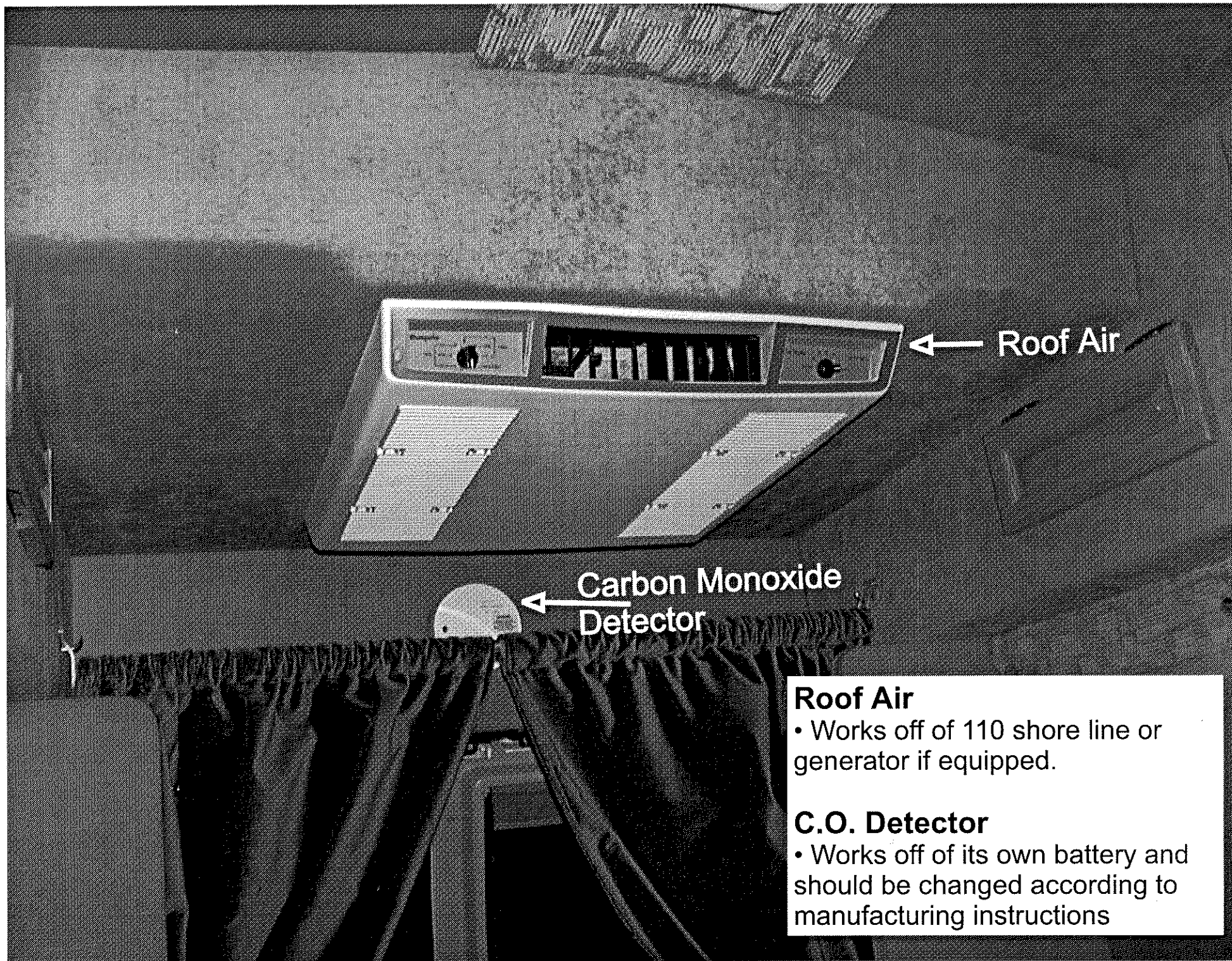
\* Being replaced by switch panel on page 1.

**Hot Plate**

- Works off of 110 shore line or generator if equipped.

**12 volt Outlet**

- Works off of aux battery



Roof Air

Carbon Monoxide  
Detector

### **Roof Air**

- Works off of 110 shore line or generator if equipped.

### **C.O. Detector**

- Works off of its own battery and should be changed according to manufacturing instructions

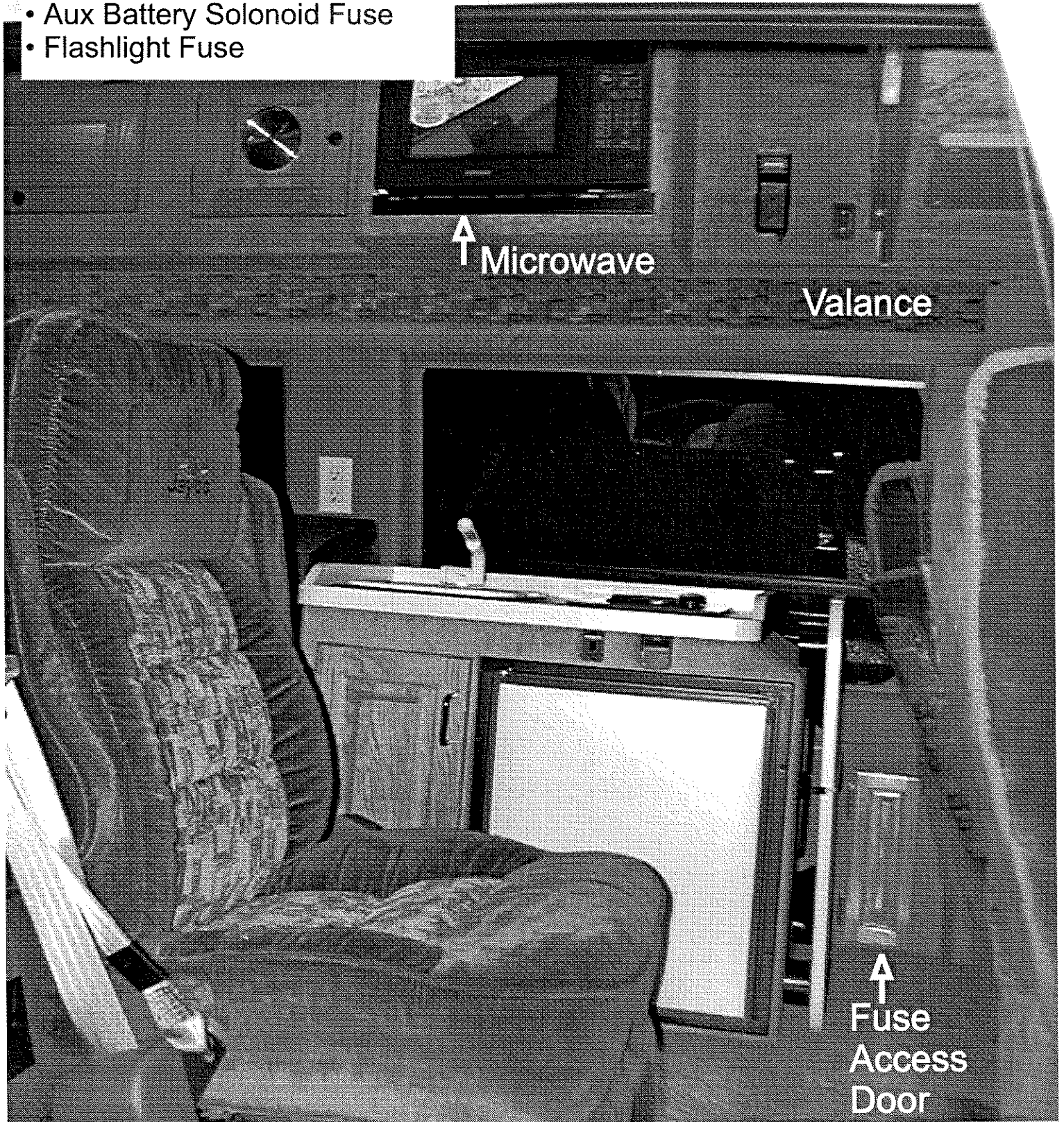


## Microwave

- Works off of 110 shore line or generator if equipped.  
(Camper 3 location shown)

## Fuse Access Door

- Aux Battery Solenoid Fuse
- Flashlight Fuse



Driver Side Sofa

Camper  
Fuse Box

Service Panel

### Camper Fuse Box

Camper 3 shown - Other models, box is in different location.

### Service Panel

Holds Aux Battery Solenoid  
Sink Pump

12 Volt Converter

(Camper 3 shown - Other models panel is in different location).



## Cassette Stool

- Works off of Aux Battery
- Shown with cassette partially pulled out (Camper 5 shown)

↑  
Cassette Stool



## Electro Magic Stool

- Works off of Aux Battery
- (Camper 3 shown)

Electro Magic Stool



## Porch Light

- Works off of Aux Battery
- If left on and van is not running or plugged into 110 volt shore line the aux battery will eventually go dead.

13





*Jayco*

2-1/2 Gal. Fresh Water Fill

Cable T.V.  
Hook Up

Sink Drain  
Under Wheel Well

110 Volt Shore Line Hook Up

### Shore Line

- When Shore Line is hooked up Aux Battery will be charged
- Microwave - Hotplate - Roof Air, can be used.



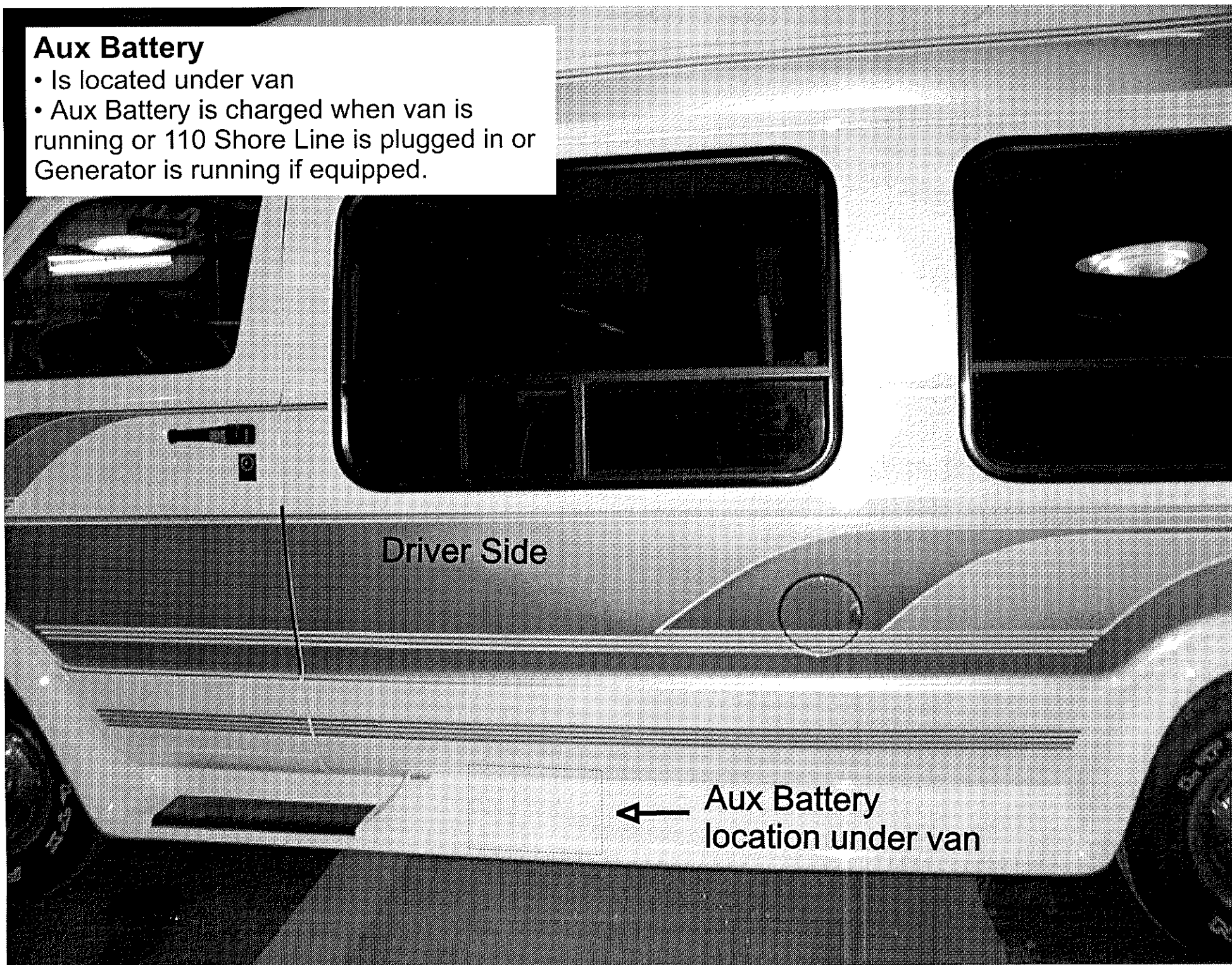
## Aux Battery

- Is located under van
- Aux Battery is charged when van is running or 110 Shore Line is plugged in or Generator is running if equipped.

15

Driver Side

← Aux Battery  
location under van



## Aux Battery Box

- Under van view
- Aux Battery should be removed and charged if van is going to be stored for long periods of time
- Check water level in Aux Battery at least every six months.

